

# Naturally Curious

## A Young Explorers' Trail



Nature can be found everywhere at Chatsworth. You'll find many plants, animals and wonders of the natural world as you explore our exhibition *The Gorgeous Nothings: Flowers at Chatsworth*. What can you see in the house today?

There are lots of places to play in nature in the garden. Look out for fun activities in the Kitchen and Cutting Garden and Pinetum.

Find out more about our family activities at: [Chatsworth.org/young-explorers](http://Chatsworth.org/young-explorers)

Please keep children supervised, especially near lakes and ponds.

# Explore the house

## 1 Painted Hall Flower Safari

Look up, look down, look all around! There are flowers everywhere. Go on a flower safari – how many can you find on your journey around the house? Check the light fittings, clocks and table legs. Try to find some made of metal, glass and stone.



## 2 Oak Room Do the twist

Keep your feet still and twist your body like the pillars in this room. Now you've loosened up, take a closer look. Can you see the fig leaves growing around them?

Can you find different shaped leaves in the cases in this room?



## 3 Great Stairs Snake in the staircase

Keep looking for flowers, plants and animals as you head up the stairs! You might get a surprise when you find what lives in the staircase railings...

These legless reptiles are a symbol of wisdom and healing. There are lots around the house and garden – count as many as you can today.

Keep climbing the stairs until you reach the bedrooms on the next floor.



## 4 Guest Bedrooms Brilliant Birds

These bedrooms are full of flying friends – birds and butterflies happily fluttering among the bamboo, flowers and trees. Roll your trail into a tube and use it to go birdwatching. Let one of our guides know if you are able to identify a species!



## 5 Green Satin Room Nature in a frame

Take a moment to sit down. Think about the flowers, leaves, birds and animals you have gathered so far. Draw your favourites in the frames provided. Take your art home or share it with us.

## 6 Great Chamber

### Fossils and Fountains

Find a window and take a seat. Look closely at the crinoid fossils you are sitting on – they look like nuts and bolts. You can discover more of these in the rock garden.

From your seat, admire the view of the water fountain. It is powered by rain water from the lakes above Chatsworth. It can reach a height of 90 metres – about the same as 16 giraffes standing on top of each other!

Walk tall as you continue your journey.



## 7 South Sketch Marvellous Minerals

Can you see the collection of minerals here? Ask a guide if you can share their torch and inspect the bright colours. Use the colour chart on this trail and match each one to a mineral.



## 8 Great Dining Room Flower Power

Look up, look down, look all around! There are flowers on the ceiling and flowers on the floor.

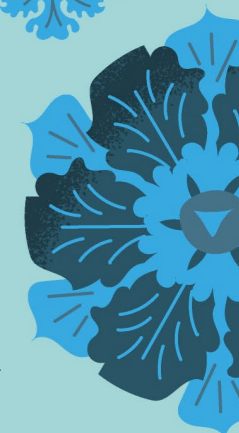
There are flowers on the curtains and carved onto the door!

Find them and then have a go at finishing this poem

---



---



# Explore the garden

## 1 Kitchen and Cutting garden

### Bugs and Botany

Explore amongst the flowers and seed heads. Can you spot any bumblebees or butterflies feeding on nectar? Look carefully – can you see powdery pollen in the centre of the flowers?



## Explore with Your Ears

Be still. Close your eyes. Soak up the sounds of the garden with your ears wide open. Can you hear the rustle of leaves? Can you hear a tap-tap-tapping? It might be a woodpecker or a tree creeper!



## Sing-along to Birdsong

As you walk through the garden you might hear bird song. Different birds make different sounds. Listen carefully – how many songs can you hear? Can you copy the sounds by whistling or singing?



## 2 Cedar

### Tiny Twig Rapids

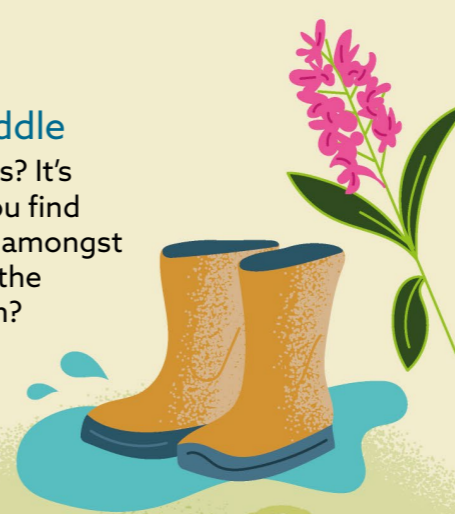
Find dead twigs no bigger than your finger. Drop them in the stream and see how far they go – can they get through the natural obstacles to win the race?



## 3 Trout Stream

### Explore and Paddle

Wellies or no wellies? It's your choice. Can you find any orchids hidden amongst the wildflowers on the banks of the stream?



## 4 Arboretum Walk

### Tree Stumps

Each ring in a tree stump represents one year. If there is a wide gap between rings then it was a good growth year with lots of water! Count the rings and age the tree.



## 5 Pinetum

### Deadwood Explorers

Deadwood is full of life and a vital part of a woodland ecosystem. Go on a hunt for standing or lying deadwood. Clue: look carefully for moss, lichen and fungi. Use the colour chart to identify many shades of green in the pinetum.



## 6 Rock Garden

### Fossil Hunting

Find the large rock stacks in the centre of the rock garden. Look closely – they are full of ancient sea fossils called crinoids which existed 300 million years before dinosaurs. How do they feel to touch?

